

Lebanon Community
Hospital Foundation

Critical Care Unit Campaign





One patient's *story*

One morning in 2008, retired Lebanon logger Don Johnson was chopping wood at his house. The next moment, with no warning, he was doubled over in severe pain.

"He was acting like he was having a stroke," Don's wife, Maryland, recalled, "but I just had this feeling that it was something else."

Don was rushed to Samaritan Lebanon Community Hospital, where surgeon James Haeberlin, MD, performed emergency exploratory surgery and diagnosed him with colitis — an acute, life-threatening condition of the colon.

After the surgery, Don was placed in the hospital's Critical Care Unit, the department that cares for all patients who need intense, constant care. Many patients in the Critical Care Unit are going through life-or-death situations, as Don was.

In fact, during the hours after his surgery Don suffered intense bleeding and a heart attack as his body wrestled

"Our ability to bring state of the art technology and services depend on excellent staff and strong financial support. The foundation supports bringing the latest in medical equipment to meet the needs of our most critically ill patients."

— William Barish, MD,
Director of Inpatient Care Services

with the illness. Before the night was over, the Johnsons say, Dr. Haeberlin had saved Don's life no less than three times.

Today, thanks to Dr. Haeberlin and the staff in the Critical Care Unit, Don has recovered and is back to enjoying life.

"Our community has a priceless treasure," Maryland said. "It's called Samaritan Lebanon Community Hospital."

The need for an expanded

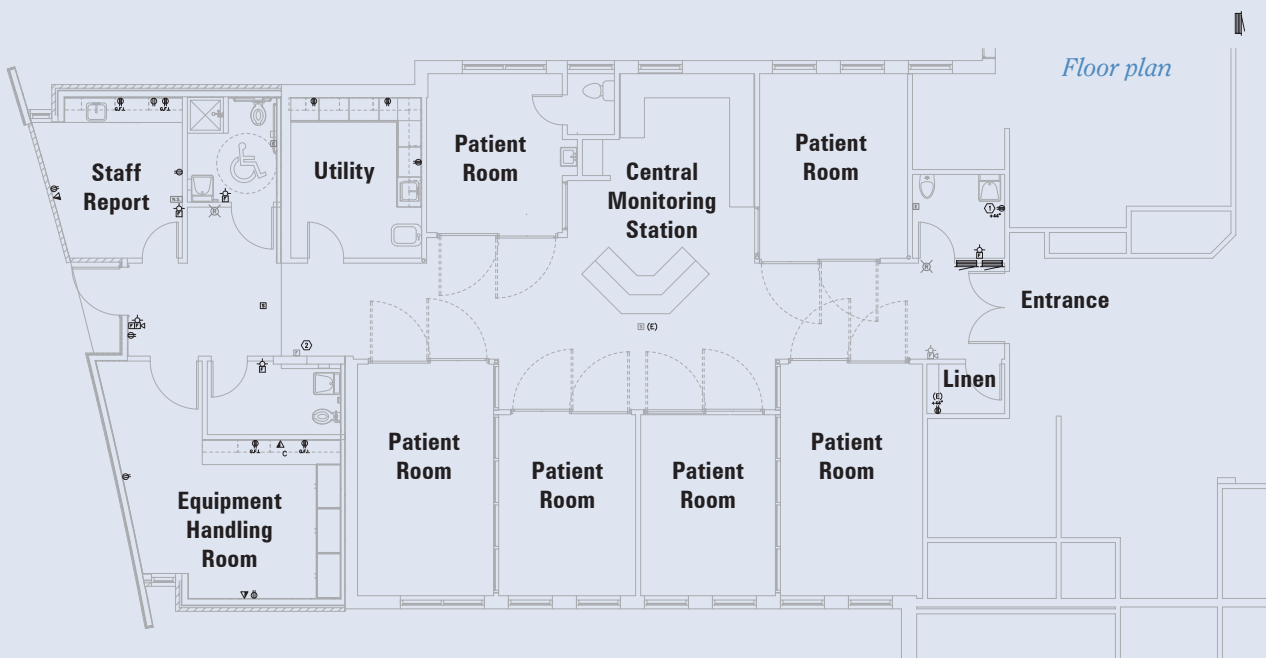
Critical Care Unit

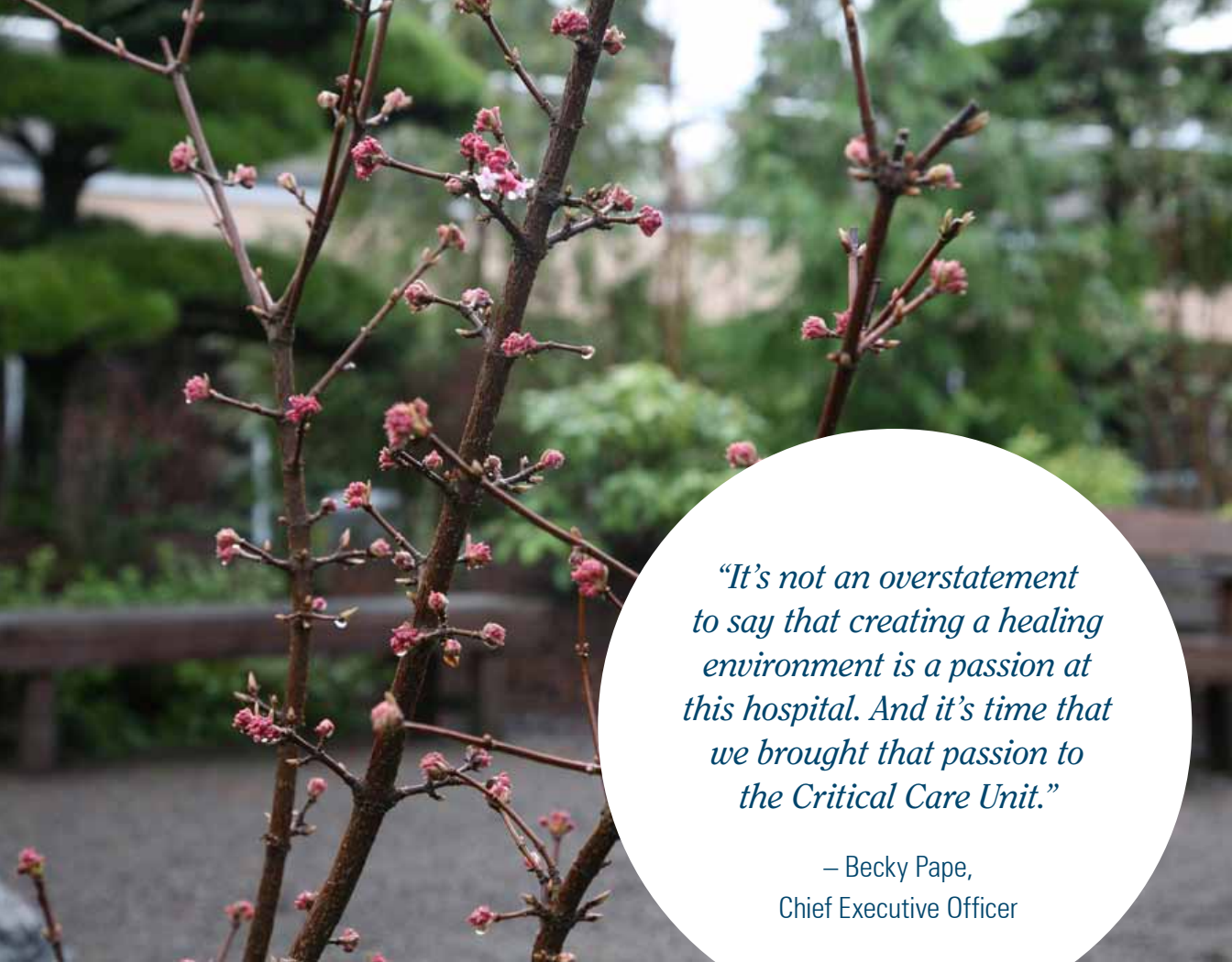
Each year, an average of 390 patients like Don are admitted to the Critical Care Unit at the Lebanon hospital. It is the place where lives are saved, where the most intense medical care in the hospital happens.

In order to meet the needs of our growing east Linn community, as well as a changing patient population, Samaritan Lebanon Community Hospital needs to undertake a significant renovation of the Critical Care Unit. The project will accomplish several important things:

- Add a new storage area for equipment. Currently, equipment is being stored in a patient room, making that room unavailable to our patients.
- Add an ADA-accessible bathroom for patients, equipped with a shower. Right now, the unit does not have its own patient bathroom.
- Add a new HVAC unit to improve air flow and temperature for patients and staff.
- Add a ceiling-mounted patient lift for heavy patients. The population of overweight patients continues to grow each year.
- Add a medical air compressor and distribution system.
- Upgrade the flooring and paint throughout the unit.

“The flow of activity and patient care in the unit is going to be greatly improved by this renovation,” said Wendie Wunderwald, Vice President of Patient Care Services. “Our staff is very excited about this project.”





“It’s not an overstatement to say that creating a healing environment is a passion at this hospital. And it’s time that we brought that passion to the Critical Care Unit.”

– Becky Pape,
Chief Executive Officer

Adding to the *healing environment*

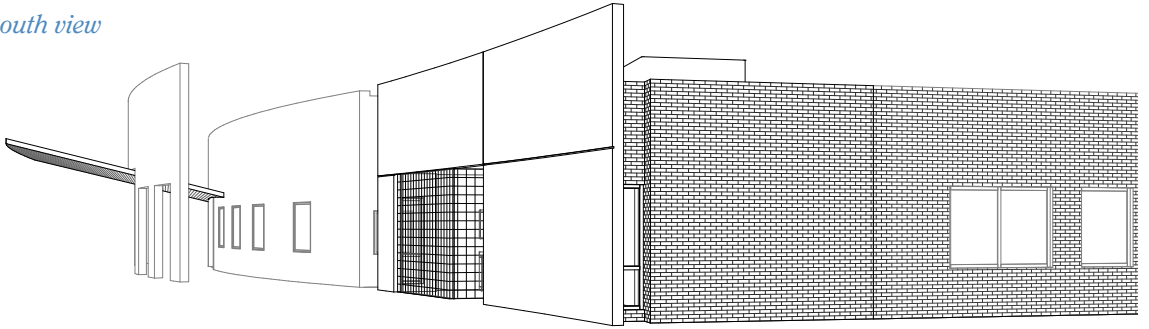
Samaritan Lebanon Community Hospital has cultivated a national reputation for the unique healing environment it provides patients. Recognizing the growing body of research demonstrating that physical environment impacts patient recovery times, need for pain medication and more, the hospital built an 11,250-square-foot healing garden at the center of the hospital in 2004.

Designed by internationally renowned landscape designer Hoichi Kurisu, the garden has been featured in *The Oregonian* and the *Journal of Japanese Gardening*. Kurisu received First Place in the 2005 Healthcare Environment Award Competition for his work on the garden. The garden was funded completely by donations to the Lebanon Community Hospital Foundation.

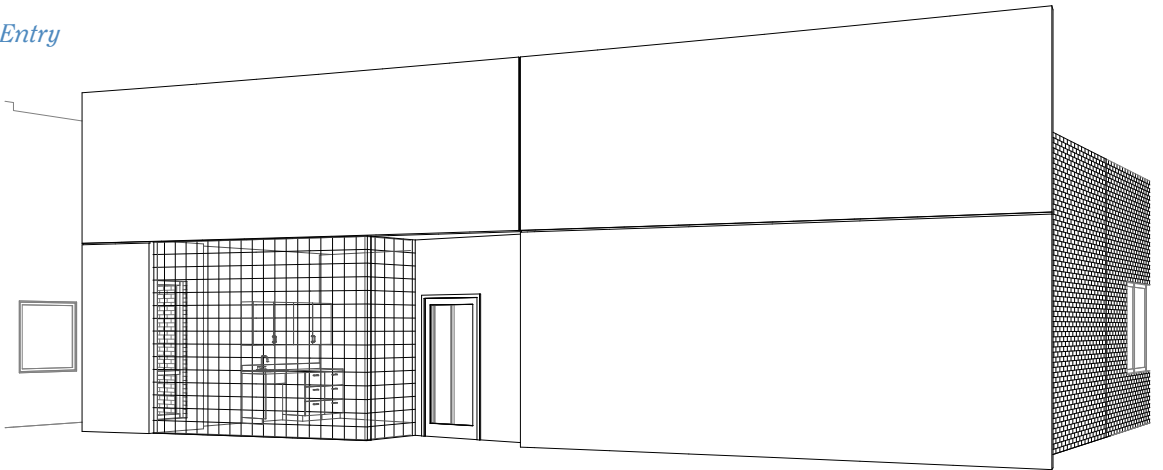
After the completion of the healing garden, the hospital constructed the Emenhiser Infusion Center, which provides services to chemotherapy and other infusion patients. The center overlooks the healing garden and its groundbreaking healing environment design was featured in *Modern Healthcare Magazine*. The construction of the Emenhiser Infusion Center was also supported by donors.

The renovation of the Critical Care Unit will extend the healing environment that the hospital has become known for — bringing a warm and friendly feel to what is often one of the most stressful areas of the hospital.

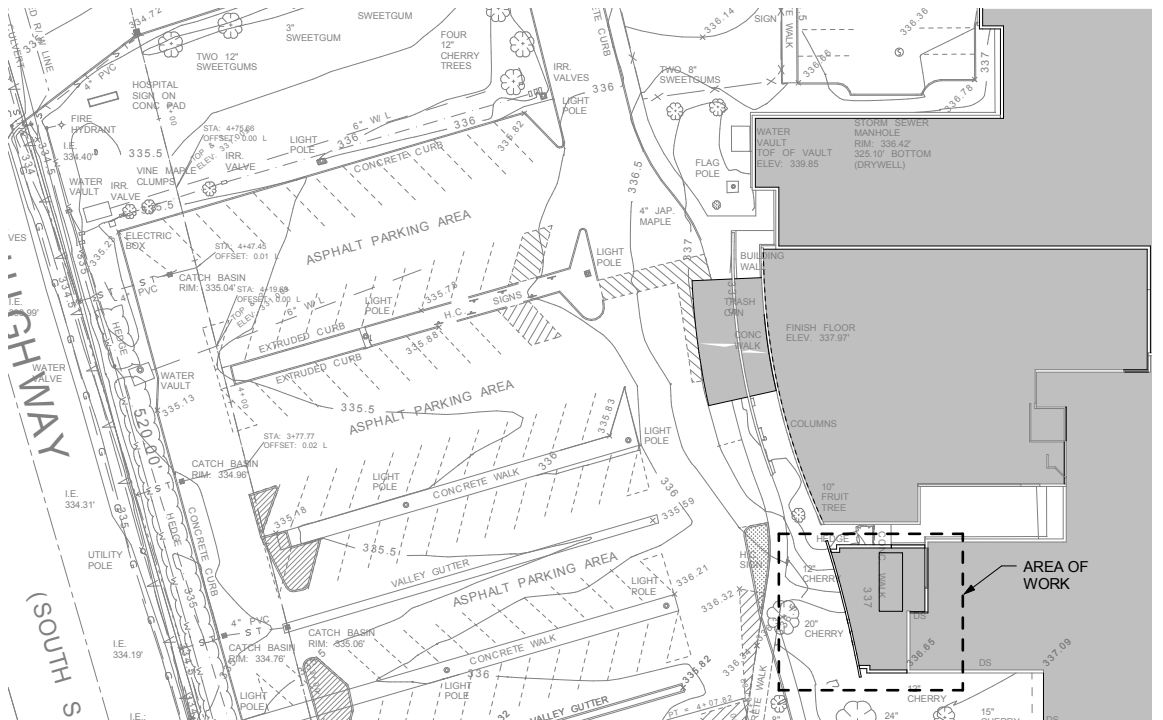
South view



Entry



Architectural site plan



How you can *help*

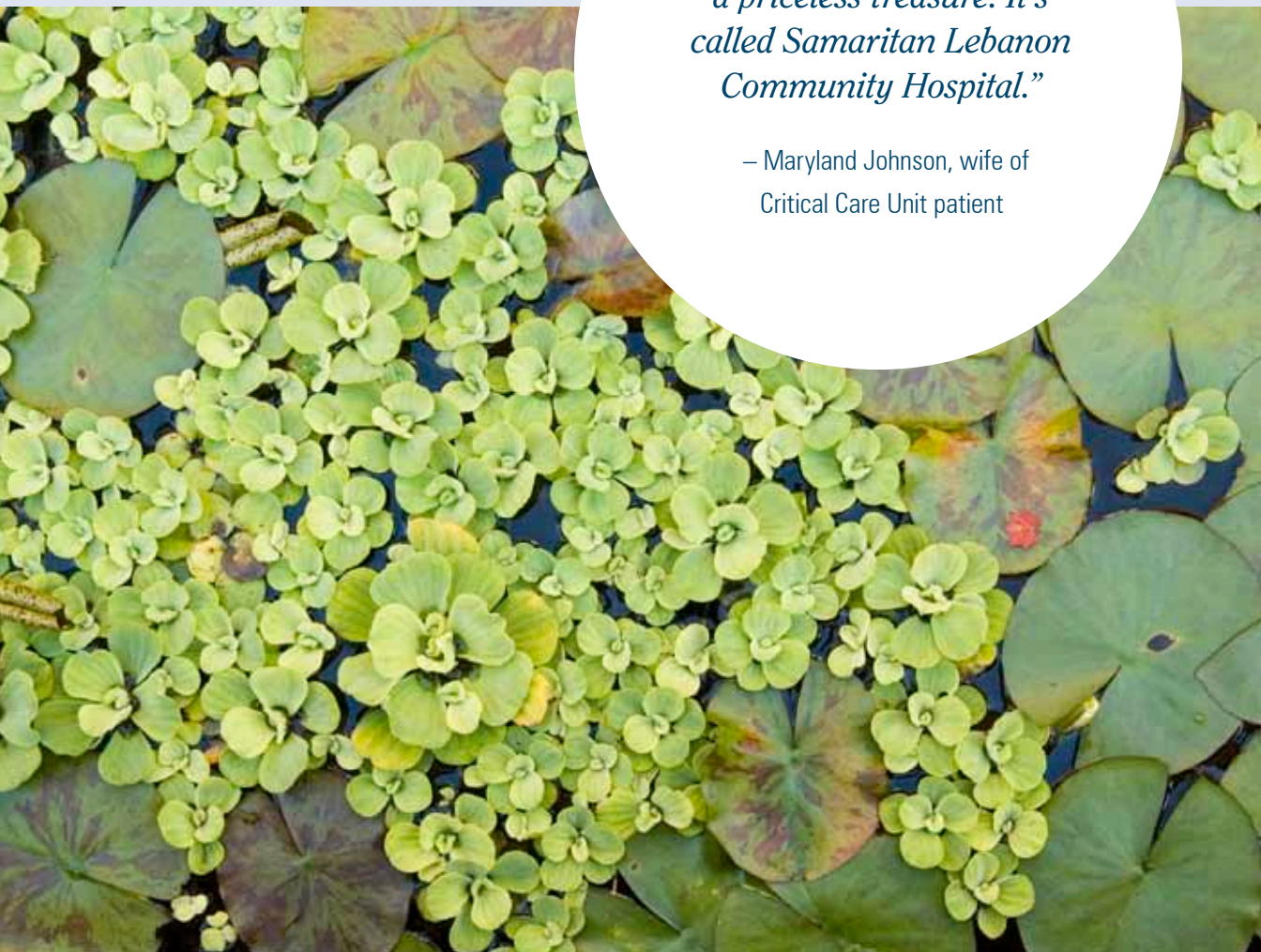
The overall cost of the renovation project, which is scheduled to begin in the summer of 2011, is estimated at \$635,000. The hospital foundation has committed to raising \$385,000 toward this cost, with all funds going directly to construction and equipment needs.

Your gift toward this important project will have a lasting impact, ensuring that the hospital has a Critical Care Unit that is able to serve the needs of east Linn County for years to come.

For more information about making a gift toward this project, contact Betty Koehn, Director of the Lebanon Community Hospital Foundation, at (541) 451-7063.

“Our community has a priceless treasure. It’s called Samaritan Lebanon Community Hospital.”

– Maryland Johnson, wife of
Critical Care Unit patient





525 N Santiam Hwy
Lebanon, OR 97355
(541) 451-7063

www.samhealth.org