

# The Navigator

Important news for Samaritan Health Plan Operations' network  
physicians and health care professionals

Important plan changes, updates and announcements .....	2
HEDIS Chart reviews coming soon.....	2
New quality management project, spirometry testing for COPD.....	2
Samaritan Healthy KidsConnect adds new, unsubsidized plan for those above 300% Federal Poverty Level (FPL) .....	3
Provider resources .....	4
Introduction to ICD10 .....	4
Implementation of National Correct Coding (NCCI) Clinical Edits .....	5
Newly paneled providers .....	5

PLEASE ROUTE  
to appropriate physicians  
and professional health care  
providers in your office.

# Important plan changes, updates and announcements

## HEDIS CHART REVIEWS COMING SOON

1

As part of our annual Healthcare Effectiveness Data and Information Set (HEDIS) reporting, Samaritan Advantage Health Plan HMO (SAHP) is required to gather specific data from the medical records of our members. This is required by the contract between SAHP and the Centers for Medicare & Medicaid Services (CMS). It is also part of our Quality Management Program.

SAHP staff may be contacting your office in the next couple of months to schedule a time for chart reviews and/or to request medical records by fax. If you are contacted for a site visit, please plan accordingly to ensure that our staff will be able to access electronic medical records (EMR) or physical medical records as necessary. Please allow our staff to review and print (or copy) all sections of our members' charts as requested, or provide copies at no charge. The need to print or copy records should be very minimal.

Many SAHP participating providers are part of Samaritan Health Services (SHS). For these providers we will make every effort to obtain the needed data from the SHS EMR system before contacting your office for a site visit or to request documentation via fax.

Please note that HIPAA allows the release of this medical information for health plan operations and quality improvement activities without the member's written consent.

If you have any concerns about these upcoming site visits or experience any complications during the visits, please contact Beth Truax by email at [etruax@samhealth.org](mailto:etruax@samhealth.org) or by phone at (541) 768-4337. You may also contact Beth if you want to request a HEDIS report that is specific to you and/or your clinic, or to find out more about HEDIS reporting in general.

## NEW QUALITY MANAGEMENT PROJECT, SPIROMETRY TESTING FOR COPD

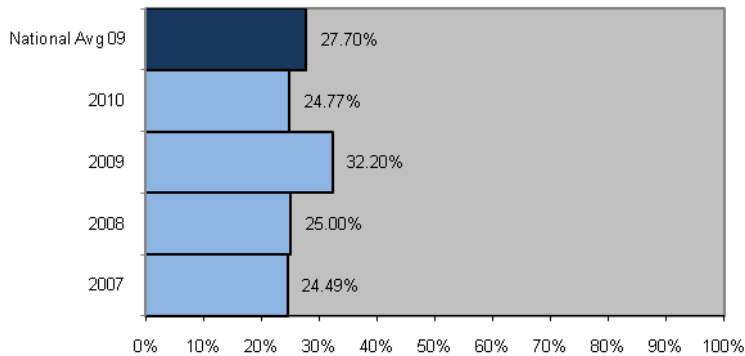
1 2 3 4

Healthcare Effectiveness Data and Information Set (HEDIS) 2010 results are in, and after much review Samaritan Health Plan Operations (SHPO) has implemented a new project focusing on increasing the use of spirometry testing in the assessment and diagnosis of Chronic Obstructive Pulmonary Disease (COPD).

SHPO chose to focus on this project for several reasons:

- COPD is a major cause of chronic morbidity and mortality throughout the world and in the U.S.<sup>1</sup>
- Symptoms of COPD range from chronic cough and sputum production to severe, disabling shortness of breath, leading to significant impairment of quality of life.<sup>2,3</sup>
- COPD afflicts nearly 16 million adults in the U.S.<sup>2,3</sup>
- COPD is the fourth leading cause of death in the U.S., and is projected to move to third place by 2020.<sup>2,3</sup>
- Though several scientific guidelines and specialty societies<sup>4,5,6,7</sup> recommend use of spirometry testing to confirm COPD diagnosis and determine severity of airflow limitation, spirometry tests are largely underutilized.
- Based on HEDIS 2010 (see chart below), the rate at which our members are receiving spirometry testing for assessment and diagnosis of COPD is below the national average.

**SAMARITAN ADVANTAGE - USE OF SPIROMETRY TESTING IN THE ASSESSMENT AND DIAGNOSIS OF COPD**



**What we need from you**

Utilize spirometry testing to confirm suspected COPD or newly active COPD. Proper diagnosis and assessment play a crucial role in treatment of this disease. SHPO is committed to high quality health care for our members and we need your help to improve their outcomes.

*References*

- <sup>1</sup> Mannino, et al. Chronic Obstructive Pulmonary Disease Surveillance—United States, 1971–2000. MMWR. August 2, 2002; 51(SS-6):1–16.
- <sup>2</sup> Snow, et al. 2001. Special Report: The Evidence Base for Management of Acute Exacerbations of COPD, Clinical Practice Guideline, Part 1. Chest. 119:1185-1189.
- <sup>3</sup> National Heart, Lung, and Blood Institute. 2001. Date Fact Sheet: Chronic Obstructive Pulmonary Disease (COPD). May.
- <sup>4</sup> American Thoracic Society. Standardization of Spirometry. 1994 Update. www.thoracic.org
- <sup>5</sup> National Heart, Lung, and Blood Institute/World Health Organization. Global strategy for the diagnosis, management, and prevention of chronic obstructive pulmonary disease: Global Initiative for Chronic Obstructive Lung Disease (GOLD). Executive Summary, updated 2004. <http://www.goldcopd.com> (September 2004)
- <sup>6</sup> Institute for Clinical Systems Improvement (ICSI). Health Care Guideline: Chronic Obstructive Pulmonary Disease. Third edition, December 2003. <http://www.icsi.org> (September 2004)
- <sup>7</sup> VA/DoD. Clinical Practice Guideline for the Management of Chronic Obstructive Pulmonary Disease (COPD). Guideline Summary. <http://www.oqp.med.va.gov/cpq/cpq.htm> (October 2001)

**SAMARITAN HEALTHY KIDSCONNECT ADDS NEW, UNSUBSIDIZED PLAN FOR THOSE ABOVE 300% FEDERAL POVERTY LEVEL (FPL)**



**On Jan. 1, 2011**, Samaritan Healthy KidsConnect began offering a plan for those who are not eligible for State subsidies on the Healthy Kids Program (qualifying family income level between 200% and 300% FPL). This plan is a typical commercial option that requires payment of monthly premiums that the State does not subsidize in any way. The plan is for children whose family income level is above 300% FPL. This plan offers the same benefits as the subsidized Healthy KidsConnect plan, but has a coinsurance/cost-share model. A summary of the benefits are as follows:

- \$0 for preventive services are
- 20% coinsurance for non-preventive, covered services
- \$1,000 deductible that the member is required to meet before the plan pays
- \$1,000 annual maximum dental benefit
- \$5 for generic prescriptions drugs and \$50 or 50% (whichever is the lesser) for preferred and non-preferred prescription drugs

The above is only a summary and does not include all benefits offered under Samaritan Healthy KidsConnect. For a complete description of these benefits and other important plan documents, please visit our website at [www.samhealth.org/healthplans](http://www.samhealth.org/healthplans).

Samaritan Healthy KidsConnect has also adopted changes mandated by healthcare reform and the Patient Protection and Affordable Care Act (PPACA) for all of their available plans. The Samaritan Healthy KidsConnect plan options include our No Cost Share Plan for American Indian/ Native Alaskan enrollees; the Subsidized option for those who have been determined to be between 200% and 300% of the Federal Poverty Level (FPL); and the 300% and above option for those not eligible for subsidies.

The 200%-300% plan option has no changes outside of those mandated through health care reform. The following is a summary of the mandated changes applicable to Samaritan Healthy KidsConnect plans.

- Lifetime maximum limits have been removed.
- Mental health limits have been removed.
- Member appeals processes have changed.
- The definition of Preventive Services has broadened.

Samaritan Health Plans will continue to modify the plans in order to meet these requirements and mandates with Reform as they evolve. If you have questions regarding Samaritan Healthy KidsConnect Plans or about what we are doing to meet reform changes, please call our Provider Hotline at (541) 768-4550, toll free 1-866- 832-4580, or visit us at the website listed above.

## Provider resources

### INTRODUCTION TO ICD10

1 2 3 4 5

With the ICD10 coding system set to be implemented on October 1, 2013, medical and professional staff will need to gain knowledge of the new methods for coding diagnoses and procedure codes.

ICD10 consists of two parts:

1. ICD-10-CM – the diagnosis classification system;
2. ICD10-PCS – the procedure classification system (will be used for facility reporting of hospital inpatient procedures ONLY, and will not affect the use of CPT).

The current system, ICD-9-CM, is 30 years old with outdated terminology and codes that lack detail when coding medical conditions; furthermore, it is inconsistent with current medical practice. The new coding system includes more codes with very specific clinical information, updated medical terminology and classification of disease. Since the new system is more detailed, clinically accurate, and uses a more logical structure, it is much easier to utilize than ICD-9-CM.

### Structural Differences between the Two Coding Systems

ICD-9-CM Diagnoses Codes:

- 3 to 5 digits;
- 1st digit is alpha (E or V) or numeric;
- Digits 2 to 5 are numeric.

ICD-10-CM Diagnoses Codes:

- 3 to 7 digits;
- Digit 1 is alpha;
- Digits 2 and 3 are numeric; and
- Digits 4 to 7 are alpha or numeric (alpha digits are not case sensitive).

ICD-9-PCS Procedure Codes:

- 3 to 4 digits;
- All digits numeric.

ICD-10-PCS Procedure Codes:

- 7 digits;
- Each either alpha or numeric (alpha digits are not case sensitive and letters “O” and “I” are not used to avoid confusion with number 0 and 1.

ICD-9-CM will no longer be maintained after ICD-10-CM/PCS is implemented. To understand the new coding system and to develop a plan so healthcare professionals are properly trained is in non-covered entities’ best interest.

**Helpful Resources**

- General ICD-10 Information, <http://www.cms.hhs.gov/ICD10>
- CDC ICD-10-CM Coding System, Mappings, and Guidelines, <http://www.cdc.gov/nchs/about/otheract/icd9/abtcd10.htm>
- AHIMA Education/Training Site for ICD 10, <http://www.ahima.org/ICD10>

IMPLEMENTATION OF NATIONAL CORRECT CODING INITIATIVES (NCCI) CLINICAL EDITS



To ensure our provider network follows proper billing standards and coding guidelines, SHPO has implemented Clinical Edits as an extension of our claim system as of Jan. 1, 2011. Clinical Edits takes into consideration National Correct Coding Initiatives (NCCI), the Centers of Medicare & Medicaid (CMS) rules for claims processing, and industry standard billing and coding guidelines. With the changes in health care reform and a spotlight on fraud, waste and abuse, SHPO is working towards enhancing the claims system, with the use of Clinical Edits, to establish compliance with healthcare reform convention for the payment of claims. SHPO appreciates your cooperation in this process.

# Newly paneled providers

From January 1, 2011 to March 31, 2011: Alphabetized by location

Provider Name	Participating Plans					Specialty	Location
	1	2	3	4	5		
Gerald E. Gibbs, MD			•	•		Oncology/Hematology	Adventist Health Tillamook Medical Group
Ben H. Douglas, MD			•	•		Family Medicine	Adventist Health Tillamook Medical Group
Robert Soans, PA			•	•		Physician Assistant	Adventist Health Tillamook Medical Group
Artisan Orthotic Prosthetic Tech, LLC	•	•	•	•	•	Durable Medical Equipment	Artisan Orthotic Prosthetic Tech, LLC
Becky Rainwater Physical Therapy, Inc		•			•	Physical Therapy	Becky Rainwater Physical Therapy
Bruce Carter, MD, PC		•			•	Plastic Surgery	Bruce Carter, MD, PC
Lydia A. Fusetti, MD		•			•	Pediatrics	Corvallis Children’s Clinic, LLC
Joyce Koerber, PA		•			•	Physician Assistant	Dallas Family Medicine, LLC

Provider Name	Participating Plans					Specialty	Location
	1	2	3	4	5		
Daniel Kort, MD, DBA Renew Womencare, LLC	•	•	•	•	•	OB-GYN	Daniel Kort, MD dba Renew Womencare, LLC
David Thompson, LMFT		•			•	Mental Health	David Thompson, LMFT
Gael Wheeler, DO, DBA Grace Good Health, LLC	•	•	•	•	•	Family Medicine	Gael Wheeler, DO dba Grace Good Health, LLC
Guempel & Hann PT, LLC, DBA Encore Physical	•	•		•	•	Physical Therapy	Guempel & Hann, PT, LLC dba Encore Physical Therapy
Jeffrey K. Thomas, MD	•	•			•	Optometry	John D. Polansky, MD PC
John Hunts, MD PhD, DBA Aesthetic Surgical Arts	•	•	•	•	•	Ophthalmology	John Hunts, MD PhD dba Aesthetic Surgical Arts
Kathryn B. Baker, DO	•	•	•	•	•	Internal Medicine	Legacy Clinics, LLC
Lauren H. Kim, MD	•	•	•	•	•	Rheumatology	Legacy Clinics, LLC
Tarek Eid, MD	•	•	•	•	•	Internal Medicine	Legacy Clinics, LLC
Jennifer L. Maestas, PA	•	•	•	•	•	Physicians Assistant	Legacy Clinics, LLC
Deborah L. Shardy, MD	•	•	•	•	•	Pediatrics	Legacy Emmanuel Children's Cancer Program
William Bennett, MD	•	•	•	•	•	Internal Medicine	Legacy Good Samaritan Hospital
Andrea N. Doepker, PT	•	•			•	Physical Therapy	Legacy Salmon Creek Hospital
Donna L. Robbins, MSN, NP	•	•	•	•	•	Nurse Practitioner	Lincoln County Human Services
Sharyl Magnuson Boyle, MD	•	•	•	•	•	Family Medicine	Lincoln County Human Services
Linda Volz, LMFT		•			•	Mental Health	Linda Volz, LMFT
Lyla Hill, LCSW		•			•	Mental Health	Lyla Hill, LCSW
Mandi Schwendiman, LAC, DBA Albany Acupuncture Clinic		•			•	Acupuncture	Mandi Schwendiman, LAC dba Albany Acupuncture Clinic
Elizabeth G. Griffin, FNP	•		•			Nurse Practitioner	Marion County Health Department
Edwin N. Austin, MD	•	•	•	•	•	Plastic Surgery	Edwin N. Austin, MD
Judy A, Cirullo		•			•	Physical Therapy	Oregon Spine and Physical Therapy
Lisa J. Stevens, PA	•	•	•	•	•	Urology	Oregon Urology Institute, PC
Lisa M. Olson, PAC	•	•	•	•	•	Physician Assistant	Oregon Urology Institute, PC
Ryan W. Lapour		•			•	Ophthalmology	Pacific Clear Vision Institute

Provider Name	Participating Plans					Specialty	Location
	1	2	3	4	5		
Bradley J. Lorenzen, OD		•			•	Optometry	Pacific Clear Vision Institute
Jennifer L. Stephens, FNP	•	•	•	•	•	Nurse Practitioner	PeaceHealth Medical Group
Jeanette A. Ardans, MD	•	•	•	•	•	Psychiatry	PeaceHealth Medical Group
Jennifer L. Di Francesco, FNP	•	•	•	•	•	Family Medicine	PeaceHealth Medical Group
Robert Brasted, MD	•	•	•		•	Psychiatry	PeaceHealth Medical Group
Kris Hallenburg, PhD	•	•	•		•	Mental Health	PeaceHealth Medical Group
Margaret N. Njonjo, MD	•	•	•	•	•	Geriatric Medicine	PeaceHealth Medical Group
Magen Holgate, LCSW	•	•	•		•	LCSW	PeaceHealth Medical Group
Denise D. Wallis, MD	•	•	•		•	Psychiatry	PeaceHealth Medical Group
Thea E. Petersen, MD	•	•			•	Family Medicine	PeaceHealth South Lane Medical
Nicole D. Wydra, PAC	•	•		•	•	Physician Assistant	PeaceHealth, Sacred Heart Physicians
Sara M. Hunt, PhD	•	•		•	•	Clinical Psychology	PeaceHealth, Sacred Heart Physicians
Peter A. Lee, DBA Peak Hearing Systems		•			•	Hearing Aid Specialist	Peter A. Lee dba Peak Hearing Systems
Joseph C. Kim, MD		•			•	Diagnostic Radiology	Radiology Associates, PC
Kelly Batey, OD		•			•	Optometry	River View Family Eyecare, LLC
Stephanie Emmert, OD		•			•	Optometry	River View Family Eyecare, LLC
Roman Wolansky	•				•	Chiropractic	Roman Wolansky, PC
Kathleen Fossen, PAC	•	•	•	•	•	Physician Assistant	Samaritan Orthopedics – Luis Vela, DO
Greg L. Personnett, MD	•	•	•	•	•	General Surgery	Samaritan Pacific Surgical Associates
Steven ver Beek, MD	•	•	•	•	•	OB-GYN	Samaritan Pacific Women’s Health Group
Megan Saxton, DMD	•	•	•	•	•	Dentistry	Siletz Community Health Clinic
Kyle L. Horner, MD	•	•			•	Dermatology	Silver Falls Dermatology, PC
Jessica P. Asherin, PAC		•			•	Physician Assistant	Stayton Family Practice, Inc.
Herschel D. Wallen, MD	•	•	•	•	•	Oncology	The Corvallis Clinic, PC
Heidi Fletemier, MD		•			•	Internal Medicine	The Doctor’s Clinic, LLP



Provider Name	Participating Plans					Specialty	Location
	1	2	3	4	5		
John Topinka	•	•	•	•	•	Ophthalmology	The Eye Clinic
Jacqueline Melanson Lentz, NP		•			•	Adult Nurse Practitioner	West Hills Healthcare Clinic, PC
Marni S. Kwiecien, MD		•			•	OB/GYN	Women's Healthcare Associates, LLC