



NEW SAMARITAN HOSPITAL COMING TO NEWPORT

EAST PARKING LOT IN-PROCESS, EXTERIOR BRICK GOING UP

Work is picking up on the employee parking lot located on the east side of the hospital. Crews are grading, prepping for the addition of curbs and gutters and installing light pole bases. Meanwhile, when it's not raining, masons are laying brick on the north side of the building and have already finished the west side. Crews continue to install windows and flashing throughout and finish up adding weather barrier to a few remaining nooks and crannies.

SEISMIC WORK COMPLETE; DRYWALL STARTING

With the seismic retrofit complete, the interior focus is on getting the last few walls framed and installing insulation. Drywall material is now on-site, and installation has begun in what will be the Wound/Ostomy department. In a few days, heaters and dehumidifiers will be brought in to keep the building dry and toasty for the finishing work ahead.

TRANSITION PLANNING HAS BEGUN

Planning is underway on how to best transition staff and services when the renovated building is complete. Taking the learnings from phase one — which was a far more complicated move than this one will be — and applying them to this second phase, there will be some differences, primarily that the move will be a staggered one. Support services, such as Environmental Services, Nutrition Services and Materials Management will go first, followed a week or so later by Administrative staff, and then, another week or so later, all patient-facing services. A tentative timeline is below.

TENTATIVE TIMELINE (All times subject to change)

Mid-December: Information Services will have access to the building to begin creating network infrastructure

Mid-January: Furniture installation begins

Early February: Temporary Certificate of Occupancy to be granted by the City of Newport

Last two weeks of February: Staff training on building familiarization and life safety

Late February: Support services to move in and become operational

Early March: Administrative staff to move in and become operational

Second week of March: Patient-facing services to move in and become operational

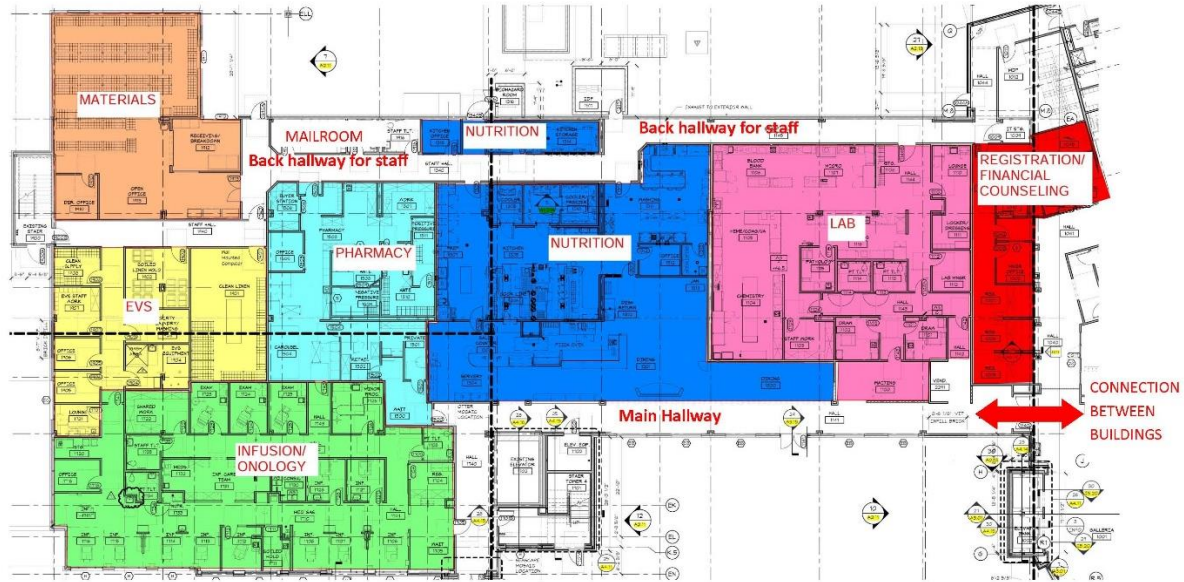
End of March: Turn over empty 1951 building to Neenan for demolishing

July/August: Parking lot in front of building in place and full project will be complete

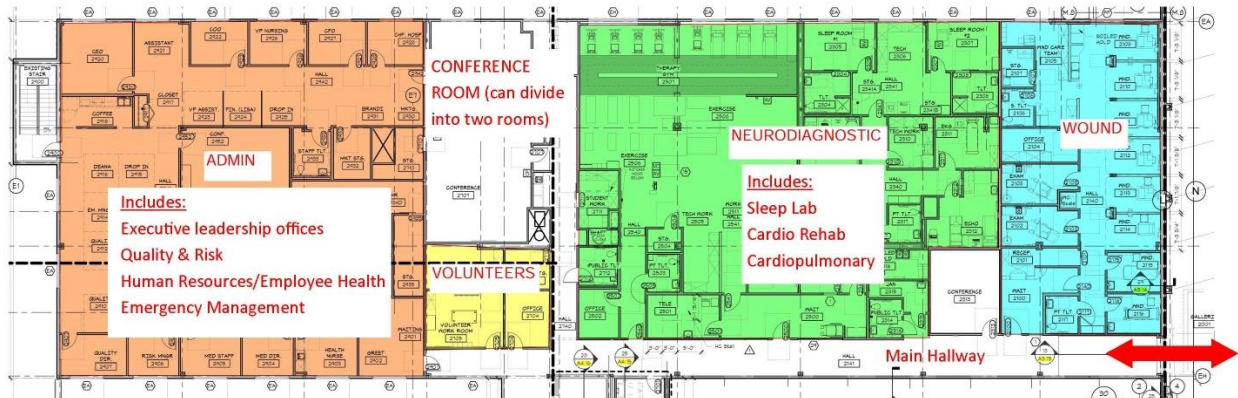
WHAT'S GOING WHERE?

If you've forgotten which departments will be located where, here is a handy visual for you.

FIRST FLOOR, RENOVATED 88 BUILDING



SECOND FLOOR, RENOVATED 88 BUILDING



QUESTIONS ABOUT THE NEW HOSPITAL PROJECT?

Send questions to Tricia Schug, SPCH Marketing: tschug@samhealth.org. More online at samhealth.org/NewHospitalNewport